



Acme Sanitary Ware Co. Ltd.


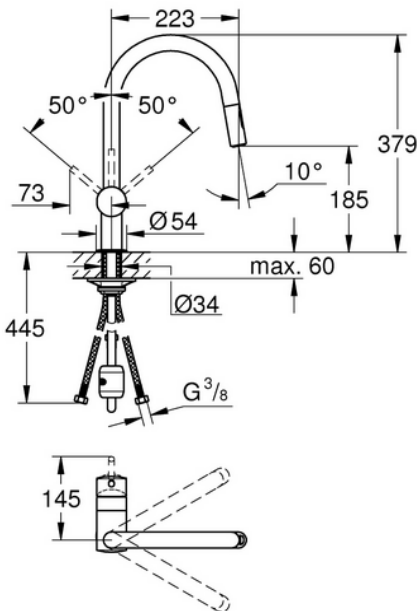

1/F, Acme Building, 22-28 Nanking Street, Kowloon, Hong Kong
Tel: 2388 7171 Fax: 2710 8012
Email: acme@acmesanitary.com.hk
Website: www.acmesanitary.com.hk



Pure Freude
an Wasser

PROJECT		REF		REV	ITEM CODE	
LOCATION		DATE			PAGE	

SANITARY WARE SPECIFICATION SHEET

Item Descriptions	GROHE (Germany) "Minta" Chrome plated 3/8" single-lever sink mixer with pull-out dual spray; nominated flow rate 3.5 L/min in WELS Grade 1; Registration No. TM 21-0026	Illustration/ Drawing										
Dimensions	L223 x W145 x H379 mm	 <div><div>用水效率標籤 Water Efficiency Label</div><div>級別 Grade 1</div><div>GROHE StarLight®</div><div>GROHE SilkMove®</div><div>SpeedClean</div><div>Easydock</div><div>Pull-out Dual Spray</div></div>										
Model	32321002											
Finish	Chrome Plated											
Country of origin	Germany											
Manufacturer	GROHE Limited											
Supplier	Acme Sanitary Ware Co. Ltd Mr. Eric Wong/ Mr. Don Yuen											
Contact Tel/Fax	(852) 2388-7171 / (852) 2710-8012											
E-mail	acme@acmesanitary.com.hk											
Website	www.acmesanitary.com.hk											
<p>"Minta" Single-lever sink mixer 1/2 "</p> <ul style="list-style-type: none">• C-spout• monobloc installation• GROHE StarLight chrome finish• GROHE SilkMove 46 mm ceramic cartridge• GROHE EasyDock guarantees easy retraction and smooth docking back to the starting position• pull-out dual spray• diverter: laminar spray/SpeedClean• shower jet adjustable flow rate limiter• swivel tubular spout• swivel area 360°• integrated non-return valve• protected against backflow• flexible connection hoses• rapid installation system• min. recommended pressure 1 bar <div><div><div>32321DC2</div><div>32321GN2</div><div>32321DA2</div><div>32321A02</div></div></div> <div><p>Colour options:</p><table><tr><td>● 002 I StarLight Chrome</td><td>● GL2 I Cool Sunrise</td></tr><tr><td>● DC2 I SuperSteel</td><td>● GN2 I Brushed Cool Sunrise</td></tr><tr><td>● DA2 I Warm Sunset</td><td>● DL2 I Brushed Warm Sunset</td></tr><tr><td>● A02 I Hard Graphite</td><td>● BE2 I Polished Nickel</td></tr><tr><td>● AL2 I Brushed Hard Graphite</td><td>● EN2 I Brushed Nickel</td></tr></table></div>			● 002 I StarLight Chrome	● GL2 I Cool Sunrise	● DC2 I SuperSteel	● GN2 I Brushed Cool Sunrise	● DA2 I Warm Sunset	● DL2 I Brushed Warm Sunset	● A02 I Hard Graphite	● BE2 I Polished Nickel	● AL2 I Brushed Hard Graphite	● EN2 I Brushed Nickel
● 002 I StarLight Chrome	● GL2 I Cool Sunrise											
● DC2 I SuperSteel	● GN2 I Brushed Cool Sunrise											
● DA2 I Warm Sunset	● DL2 I Brushed Warm Sunset											
● A02 I Hard Graphite	● BE2 I Polished Nickel											
● AL2 I Brushed Hard Graphite	● EN2 I Brushed Nickel											

Note:

* All information of the above is for the reference only. No prior notice is made if any changes.

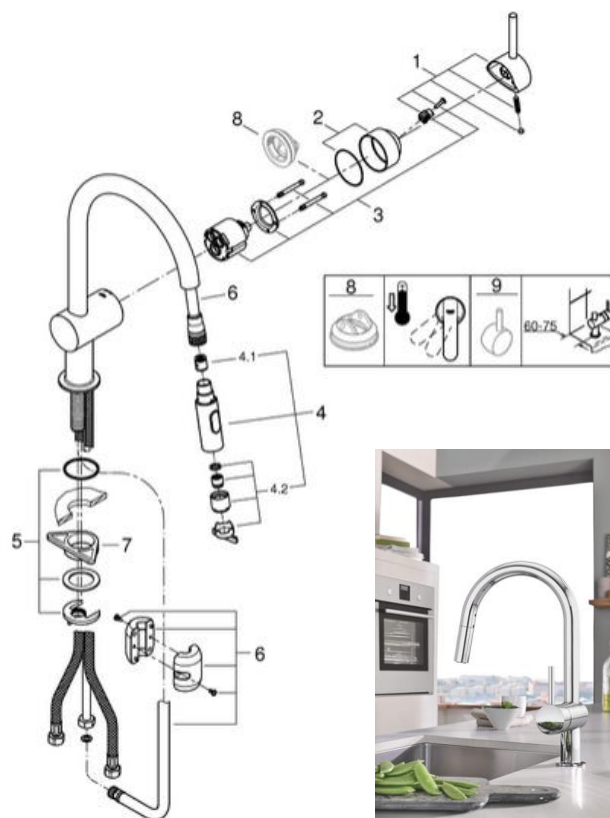
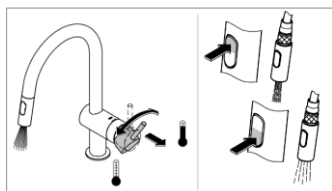


PROJECT		REF		REV	ITEM CODE	
LOCATION		DATE			PAGE	

SANITARY WARE SPECIFICATION SHEET

GROHE MINTA

A stylish, minimal kitchen doesn't mean compromising on performance. The first thing you'll notice about GROHE's Minta tap is its sleek, clean silhouette, perfect for a contemporary kitchen. But what you'll enjoy day after day is its fantastic flexibility. With a pull-out spray head with dual spray control it makes cleaning, rinsing and prepping easy, letting you get the most out of your kitchen.



SpeedClean: easy cleaning thanks to silicone nozzle

Indeed, the name says it all: with the SpeedClean technology, you'll have limescale removed from the spout in the blink of an eye thanks to a nozzle made of silicone. A quick wipe with your fingers is all it takes to remove any limescale deposits, saving you a lot of time and effort!

Pull-out comfort shower head with two different spray types

Whether washing vegetables, cleaning the basin or filling pots – the pull-out comfort shower head gives you maximum freedom of movement in the kitchen. At the push of a button, you can switch between a fine spray jet and a powerful shower jet at any time, making light work of your kitchen chores.

GROHE EasyDock – automatic retraction of the shower head into the spout

With our GROHE EasyDock system featuring the Glideflex low-friction hose and a small counterweight made of lead, the shower head retracts smoothly into the spout. Thanks to this technology, the tap is also super easy to install.

Pos.-nr.	Prod. description	Order-nr.
1	Lever	46015000
2	Cap	46025000
3	Cartridge	46048000
4	Pull out spray	48416000
4.1	Non-return valve	08565000
4.2	Flow straightener	48347000
5	Shank fastening assembly	46345000
6	Shower hose	48293000
7	Support plate	05334000
8	Temperature limiter	46375000
9	Lever	40684000

Note:

* All information of the above is for the reference only. No prior notice is made if any changes.



自願參與用水效益標籤計劃 - 水龍頭
Voluntary Water Efficiency Labelling Scheme - Water Taps



茲證明
This is to certify that

將下列水龍頭在本計劃內註冊：
has registered the following water tap under this scheme :

牌 子 / Brand	:	Grohe + Neoperl
型 號 / Model	:	32321XX2 + 44.3132.000
種 類 / Type	:	Mixing
原產地 / Country or Region Origin	:	Portugal (Mixer) Germany (Flow Controller)

XX – denotes the code of colour

在用水效益標籤上展示的標誌

Symbolic Presentation on the Water Efficiency Label



滴水點

Water droplet(s)

用水效益級別

Water Efficiency Grade

: 1

耗水量

Water Consumption

: 3.5

公升/分鐘

litres/minute

簽發日期:

Date of Issue:

11 February 2021



水務署

Water Supplies Department



水務署署長(張業駒代行)
for Director of Water Supplies



水務署
Water Supplies Department

總部 Headquarters

香港灣仔告士打道七號入境事務大樓 48 樓

Immigration Tower, 7 Gloucester Road, Wan Chai, Hong Kong

本署檔號
Our ref.
來函檔號
Your ref.



21/2023 T/J(1142/2023)

電話
Tel.
傳真
Fax.

2824 0578

29 December 2023



**Approval of “GROHE” Sink Mixer
(General Acceptance No. C20230970)**

Your E-Application [file-id: ETJ-GA-20230928-138] dated 13 November 2023 and subsequent submission received by this department on 5 December 2023 refer.

Having considered the test reports ref. 222320PC220258E and 202535EN221835B issued on 30 November 2023 and 26 June 2023 by Fugro Technical Services Limited and WRAS certificate, this Authority accepts that the fitting described below complies with, and its use when correctly installed does not contravene, the Waterworks Ordinance and Regulations.

Name of Manufacturer: Grohe AG

Country of Origin: Portugal

Brand: Grohe

Details of Fitting: 3/8" Single lever sink mixer with
1) 1 no. of flexible hose under test report ref. 202535EN221835B &
2) 1 no. of flexible hose approved by UK's WRAS under ref. 2110370



Model: 32321XX2
(where "XX" denotes the code of colour)

Body Markings: 

Expiry Date: 31 October 2026

This Authority hereby permits the use of the above fitting in fresh water plumbing systems subject to full adherence to Waterworks installation requirements. In particular, you are required to draw your customers' attention to the following requirement-

"The cold water supply to the fitting shall be drawn from the same source that supplies the hot water apparatus so as to provide a balanced pressure and to obviate the risk of scalding in the event of a restriction or failure in the water supply."

A condition of this acceptance is that the fitting to be installed shall be replicas of the sample as certified by the testing agent mentioned above and without modifications. This acceptance may be withdrawn at any time if the standard of the fitting installed fails to meet that of the approved sample or if the fitting is found to be unsuitable for use in fresh water plumbing systems.

This acceptance is only applicable to the main body of the fitting, unless otherwise specified.

For the use of the fitting in any project, the General Acceptance Number of this letter must be quoted as a means of identification of acceptance of the fitting by this Authority.

Should you have any enquiries, please contact our Engineer Mr Albert CHOW at tel. no. 3583 4086.

Yours faithfully,



(Terry KUNG)

for Director of Water Supplies

Encl.

c.c. WSD 3321/1/82] - without catalogue
ME/MC] - with soft copy only